



# MONTHLY MEMBERSHIP PROGRESS REPORT

District 11 E2

Results as of: 5/31/2016

GMT: THOMAS MATNEY

LOCATION MICHIGAN

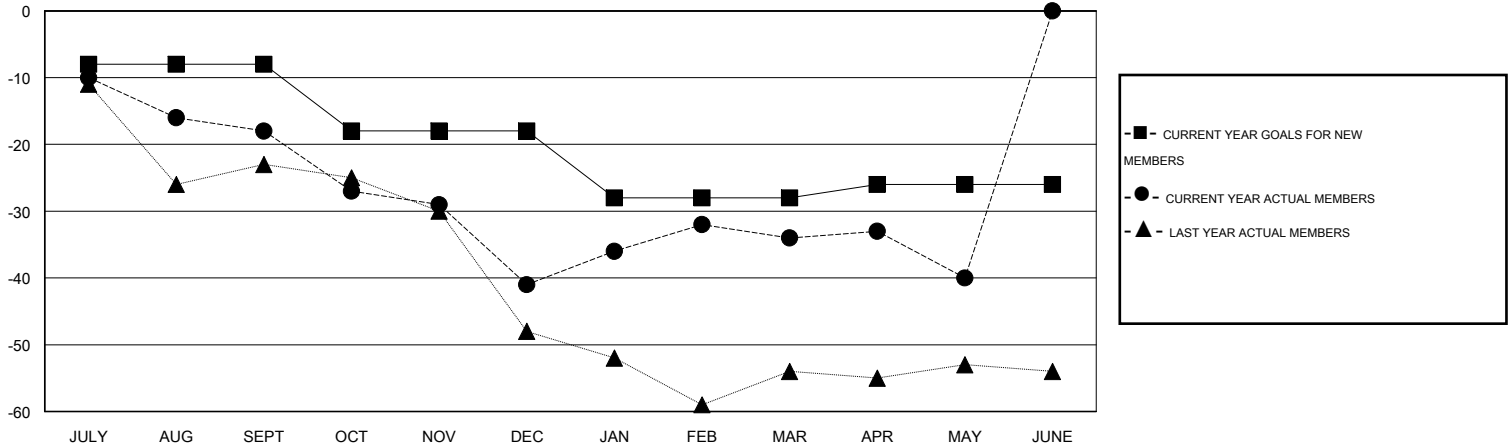
GMT CA 1

Clubs					Members				
RESULTS FOR 2015-2016					RESULTS FOR 2015-2016				
QUARTER	NEW CLUB GOAL	NEW CLUBS	DROPPED CLUBS	NET GAIN/LOSS	QUARTER	NEW MEMBER GOAL	CHARTER AND NEW MEMBERS ADDED	DROPPED MEMBERS	NET GAIN/LOSS
JULY/AUG/SEPT	0	0	1	-1	JULY/AUG/SEPT	-8	17	35	-18
OCT/NOV/DEC	0	0	0	0	OCT/NOV/DEC	-10	12	35	-23
JAN/FEB/MAR	0	0	0	0	JAN/FEB/MAR	-10	19	12	7
APR/MAY/JUNE	1	0	0	0	APR/MAY/JUNE	2	8	14	-6

GOALS AND ACTUAL NEW CLUBS CUMULATIVE



GOALS AND ACTUAL MEMBERS CUMULATIVE



DROPPED CLUBS: 1	22 CLUBS OF 36 ADDED 1 OR MORE NEW MEMBERS	<b>GENDER DISTRIBUTION</b> MALE 788 (75.12%) FEMALE 261 (24.88%)
<b>DROPPED MEMBERS</b> DECEASED 17 CLUB CANCELLED 0 OTHER 79 TOTAL 96	<a href="#">CLICK HERE FOR HEALTH ASSESSMENT DATA</a>	FAMILY UNIT MEMBERS 139 HEAD OF HOUSEHOLD 69 NON-HEAD OF HOUSEHOLD 70